



The Power of Mobile for connected Business

Wireless Devices for Retail Site Surveys

Verisae is a Minneapolis based company that provides maintenance, environmental, energy, and procurement solutions to retailers across the world. Verisae creates software and software as a service solutions that require tracking and location of assets within these retail chains. To collect information about these assets, Verisae provides a service which takes site surveys to collect information about each retail store by bar-coding and logging model numbers and serial numbers of these assets. Verisae came to Appolis to help build a mobile business application which could be used on site for collecting electronic records and transmitting them to a centralized asset management solution. Since its original creation, the application has been ported to Polish and Czech languages and is being used in US, UK, Poland, and Czechoslovakia



→ **The Appolis solution delivers the mobile capabilities for site surveys for a much lower cost than building it in house or utilizing off the shelf software.**

Technologies

This application was built using SQL Server 2005, SQL Server 2005 Compact Edition, .NET 2.0, .NET Compact Framework 2.0, and Windows Mobile 5.

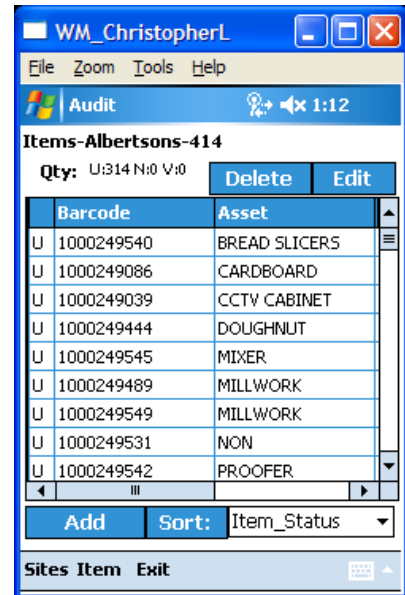
Solution Overview

From a mobile device, users login to the application and begins by either starting a new survey or continuing with an existing audit. The user selects the site to be audited which is loaded from a database file on the device. During the survey, the user selects existing items in the database, or has the option of entering a new item that does not exist. Once an item is surveyed, a barcode is associated to this asset for future reference. The screens allow full data editing for the assets as well as sorting and filtering.

Once the survey is complete, the user saves the survey and the information is uploaded to the server and command center for processing.

→ **We used SQL 2005 Compact Edition to allow users to store data and export data to the server.**

For data connectivity, Appolis utilized web services. Web services are application interfaces that allow a standardized method for creating distributed computer systems.



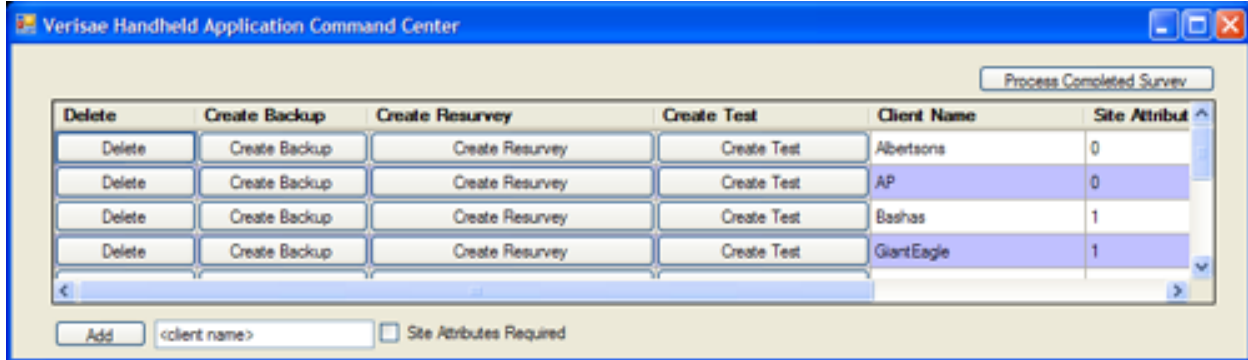
Devices

The Verisae Site Survey solution utilizes Microsoft Pocket PC technology known as Microsoft Mobile running on Symbol MC9090 Devices. This operating system tailored specifically for the handheld device delivers superior advanced wireless connection management, security, and exception handling; requirements for any enterprise quality warehouse solution.



Central Command Center

We developed the central command center to manage the consolidation of site surveys and facilitate customized attributes for data collection based on a customers needs. In addition, once imported into the command center, the data is exported to a enterprise database. All database templates for customized fields, assets, manufacturers, departments, locations, and attributes are managed from this solution. Database backups are also created from the command center to protect against data loss.



Delete	Create Backup	Create Resurvey	Create Test	Client Name	Site Attribute
Delete	Create Backup	Create Resurvey	Create Test	Albertsons	0
Delete	Create Backup	Create Resurvey	Create Test	AP	0
Delete	Create Backup	Create Resurvey	Create Test	Bashas	1
Delete	Create Backup	Create Resurvey	Create Test	GiantEagle	1

☐ Site Attributes Required