



With Management Reporter 2012, you can expect:

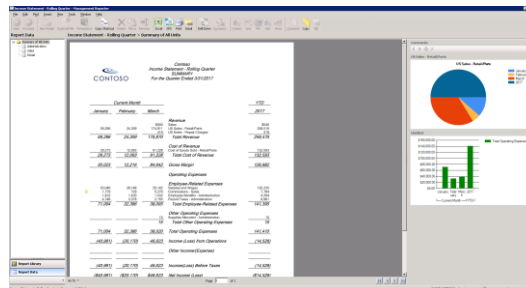
- More flexibility in designing your financial reports
- Additional opportunity to collaborate with co-workers, auditors and others during the report design, distribution and viewing processes
- An interactive report viewing experience to help you drive decisions from the report data that's delivered to you
- Deeper interoperability with your Microsoft Dynamics ERP solution, including drilling back to the Microsoft Dynamics ERP data



Management Reporter 2012 for Microsoft Dynamics® ERP is a powerful financial report solution that helps you achieve greater visibility across your organization.

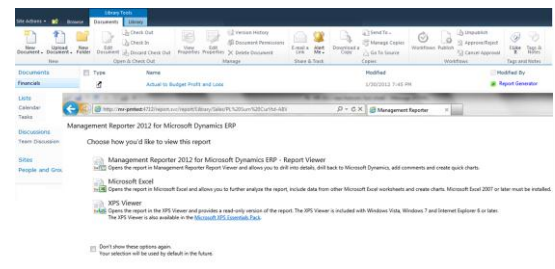
What's new in Management Reporter 2012 for Microsoft Dynamics ERP

- Additional report design flexibility streamlines your report design process
- Enhanced financial report collaboration capabilities offer the ability to react quickly to changes in your business
- Updated interaction when viewing financial reports helps users find data quickly and add additional context to their reports
- Deeper Microsoft Dynamics ERP integration delivers additional data to be included on your financial reports



Increase user productivity with Management Reporter Report Viewer enhancements like comments, charts and the ability to start a Microsoft Lync™ conversation

Get the right information out to your report consumers quickly and securely, and in the format they personally prefer



Management Reporter 2012, supports the following Microsoft Dynamics ERP solutions:

- Microsoft Dynamics AX 2012
- Microsoft Dynamics AX 2009
- Microsoft Dynamics GP 2010
- Microsoft Dynamics NAV 2009
- Microsoft Dynamics SL 2011

Management Reporter 2012 new features

- Report Design Flexibility**
 - Quickly identify accounts/dimensions that have been omitted from report building blocks
 - Format headers for rolling forecasts
 - Easily save and reuse dimension combinations when designing reports
 - Control how dimension descriptions are formatted and displayed
- Financial Report Collaboration**
 - Usability enhancements to make Report Groups more discoverable by providing access from the navigation pane
 - Schedule reports to generate on a periodic basis
 - Publish to a read-only (.XPS) report format
 - Publish reports to multiple Microsoft SharePoint® or any network location
 - Publish a personalized Microsoft Excel® (.xlsx) file
 - Personalized and secured view of data for all output types
 - E-mail reports via SharePoint alerts
 - E-mail a link to a report from within the Report Viewer
- Interactive Report Viewing**
 - Quickly create a chart based upon selected report rows and columns
 - Locate key features in Report Viewer with an enhanced toolbar
 - Jump to key areas of the report for fast analysis
 - Find a key value in a report, such as an account value or description
 - Easily page within a report
 - Add comments to important rows in a report version
 - Copy comments from one version of a report to another
 - Collaborate on a report by providing a link to the current report and selected row when launching an instant messenger client from within a report
- Deeper Microsoft Dynamics ERP Integration**
 - Trickle data from Microsoft Dynamics AX and Microsoft Dynamics NAV into Management Reporter data mart for increased performance
 - Create financial reports based upon data in Microsoft Dynamics NAV General Ledger
 - Drill from account and budget balances on a report to related information in Microsoft Dynamics ERP
 - Display or filter on properties of dimensions and transactions to design more precise financial reports.
 - Automatically integrate company information from your Microsoft Dynamics ERP
 - Report on Microsoft Dynamics AX 2012 budget reservations (pre-encumbrances/encumbrances) based upon budget funds available calculation as defined in budget control configuration
 - Manage all users (both Microsoft Dynamics AX and Management Reporter) from within Microsoft Dynamics AX
 - Dynamically align reporting trees with Microsoft Dynamics AX organizational hierarchies
 - Choose whether to include or exclude budget submodels when using Microsoft Dynamics AX 2012 budgets