

CAL Connect2014
Dynamics GP User Event



SQL REPORTING SERVICES

Dan Saffo

dans@calszone.com

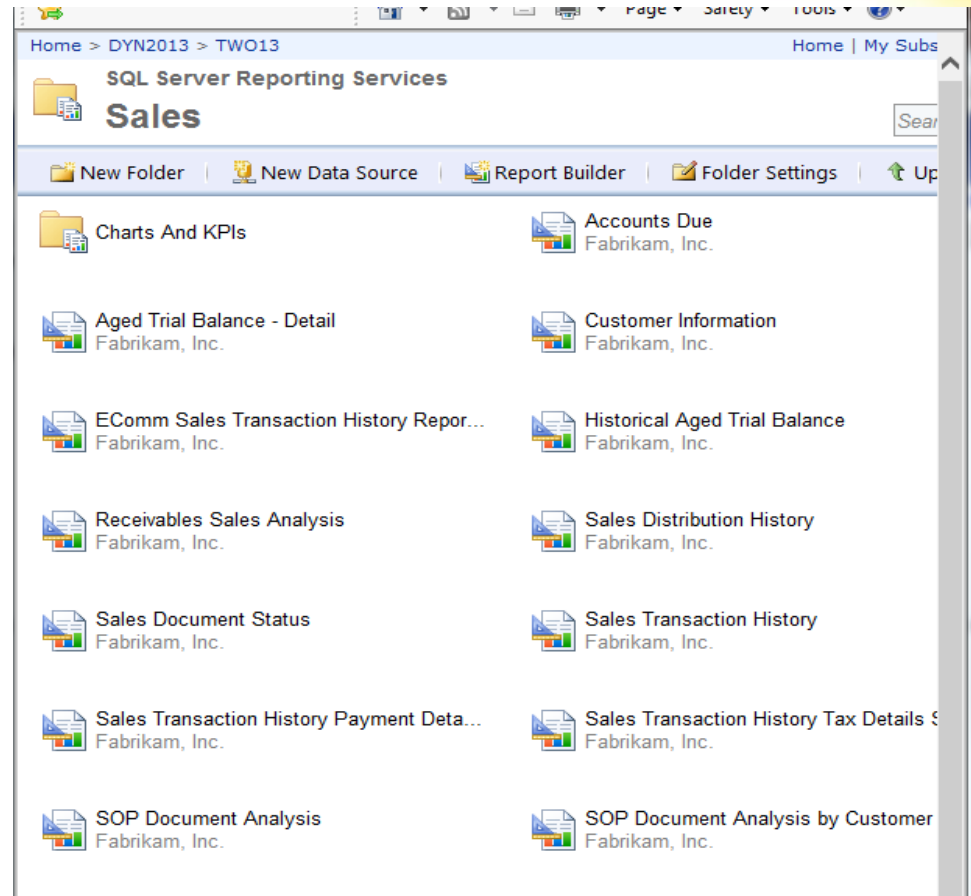
CAL Connect2014
Dynamics GP User Event



www.calszone.com

ADVANTAGES OF SSRS

- Everything is in one place
- Simple to use
- Simple to design
- Integration with GP
- Free!



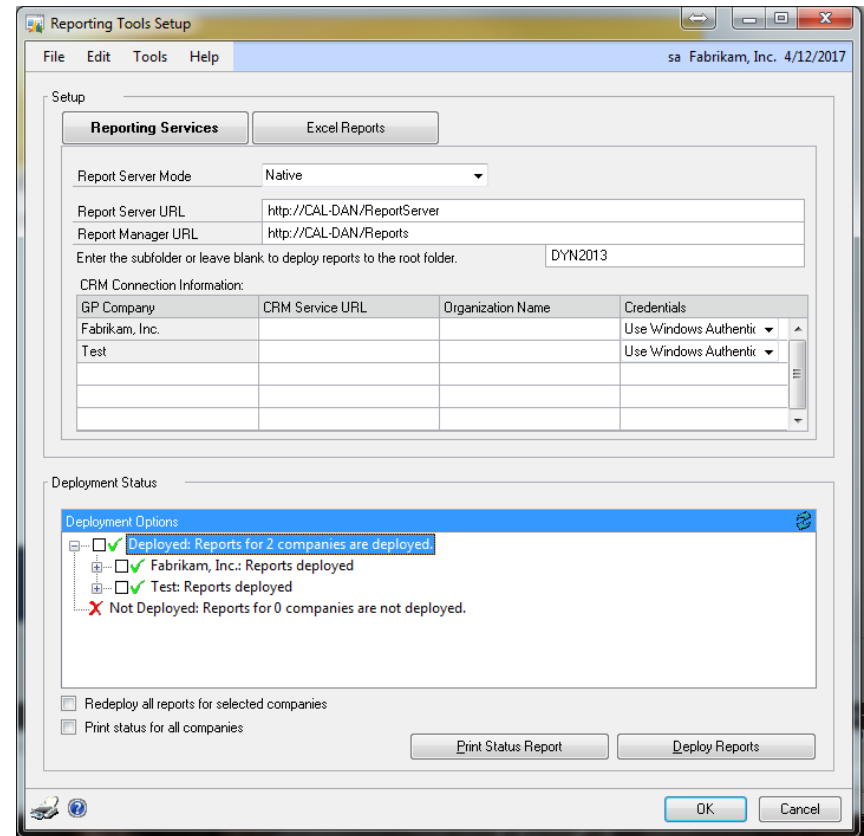
DISADVANTAGES OF SSRS

- Simplicity of Report Designer
 - It cannot do everything that other report writers can do
- Cannot deploy built-in GP reports with SQL Express
 - But you can still create custom reports!

DEPLOYING GP REPORTS

- Tools > Setup > System > Reporting Tools Setup
- Enter the Report Server and Report Manager URL
- Check all boxes
- Click Deploy

Don't forget to deploy the Excel Reports too!



ACCESSING THE REPORTS IN GP

- Accessed from Navigation Lists

The screenshot shows the Microsoft Dynamics GP interface. The left navigation pane is expanded to 'Financial', and 'Reporting Services Reports' is selected. A red arrow points to this item. The main area displays a list of reports under the heading 'Reporting Services Reports (read only)'. The table below shows the details of these reports.

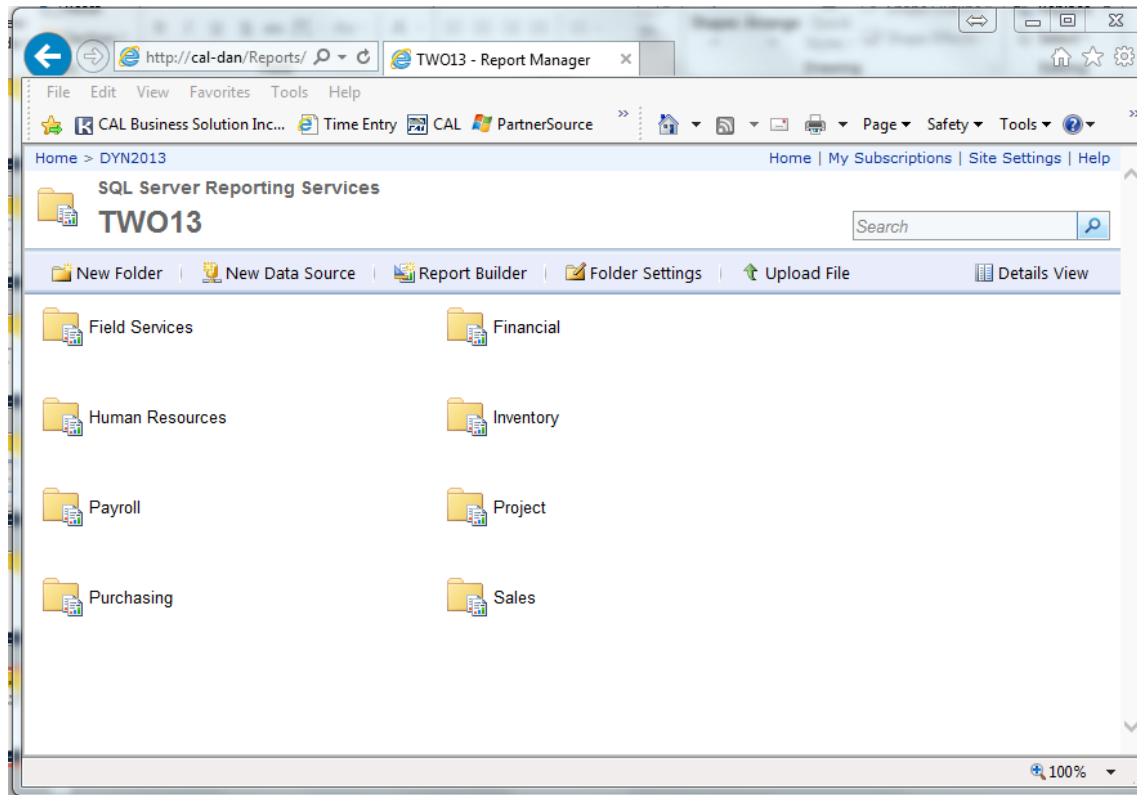
Name	Option	Series	Category
Accounts Payable Days Outstandi...	/DYN2013	Financial	TWO13
Accounts Payable Days Outstandi...	/DYN2013	Financial	TWO13
Accounts Payable Days Outstandi...	/DYN2013	Financial	TWO13
Accounts Receivable Days Outsta...	/DYN2013	Financial	TWO13
Accounts Receivable Days Outsta...	/DYN2013	Financial	TWO13
Accounts Receivable Days Outsta...	/DYN2013	Financial	TWO13
Additions Report	/DYN2013	Financial	TWO13
Bank Transaction History Report	/DYN2013	Financial	TWO13
Cash Position Detail	/DYN2013	Financial	TWO13

0 of 49 records selected.

Accounts Payable Days Outstanding Detail
Option : /DYN2013 Category : TWO13 My Report Name :
Series : Financial Product : Report Definition File Destination :

ACCESSING THROUGH WEB BROWSER

Enter the address of the reports folder on the report server. The default is <http://serverName/Reports>



Fixed Assets to General Ledger Reconciliation Report

Parameters

Run Report

Refresh Data Feed

Pages Zoom Search Export Print

Account Number	Account Description			
000-1500-00	Furniture & Fixtures			
000-1505-00	Accumulated Depreciation-Furniture & Fixtures			
000-1515-00	Accumulated Depreciation-Computer Equipment			
000-1525-00	Accumulated Depreciation-Machinery & Equipment			
000-1535-00	Accumulated Depreciation-Fleet Vehicles			
000-1590-00	FA Clearing			
000-6200-00	Depreciation Expense - Furniture & Fixtures			
000-6210-00	Depreciation Expense - Computer Equipment			
000-6220-00	Depreciation Expense - Machinery & Equipment			
000-6230-00	Depreciation Expense - Fleet Vehicles			
10 Accounts	Grand Total:	\$4,512.77	(\$4,512.77)	\$0.00

GL Post Date: First to Last
Sorted by: Account

Page: 1 of 1



www.calszone.com

Site Delivery to all Australia - Tel (03) 9792 1300



WARNING

Technical Info
Ahead!

B. Protected - Trade and Direct to the Public



www.calszone.com

SSRS SECURITY

- Set it up in the Report Server
- Set it up in SQL Server
 - Assign RPT roles in SQL Database
 - Set up custom role for custom stored procedures

SSRS TIPS AND TRICKS

- Assign Reports to Master Windows
- Export GP Reports to Excel
- Link to other reports or back to GP
- Create Dashboards with Business Analyzer

THANK YOU FOR COMING!

- Please don't forget to fill out your Evaluation form!